

# THE NEBULA

203 DG

A Fixed Price Turnkey Home & Land Package  
at Essence Estate, Toowoomba



A  
Homecorp  
Built  
**HOME**



Welcome to your new home

# THE NEBULA

(Nebula 203 DG)



4 Bedrooms



2.5 Bathrooms



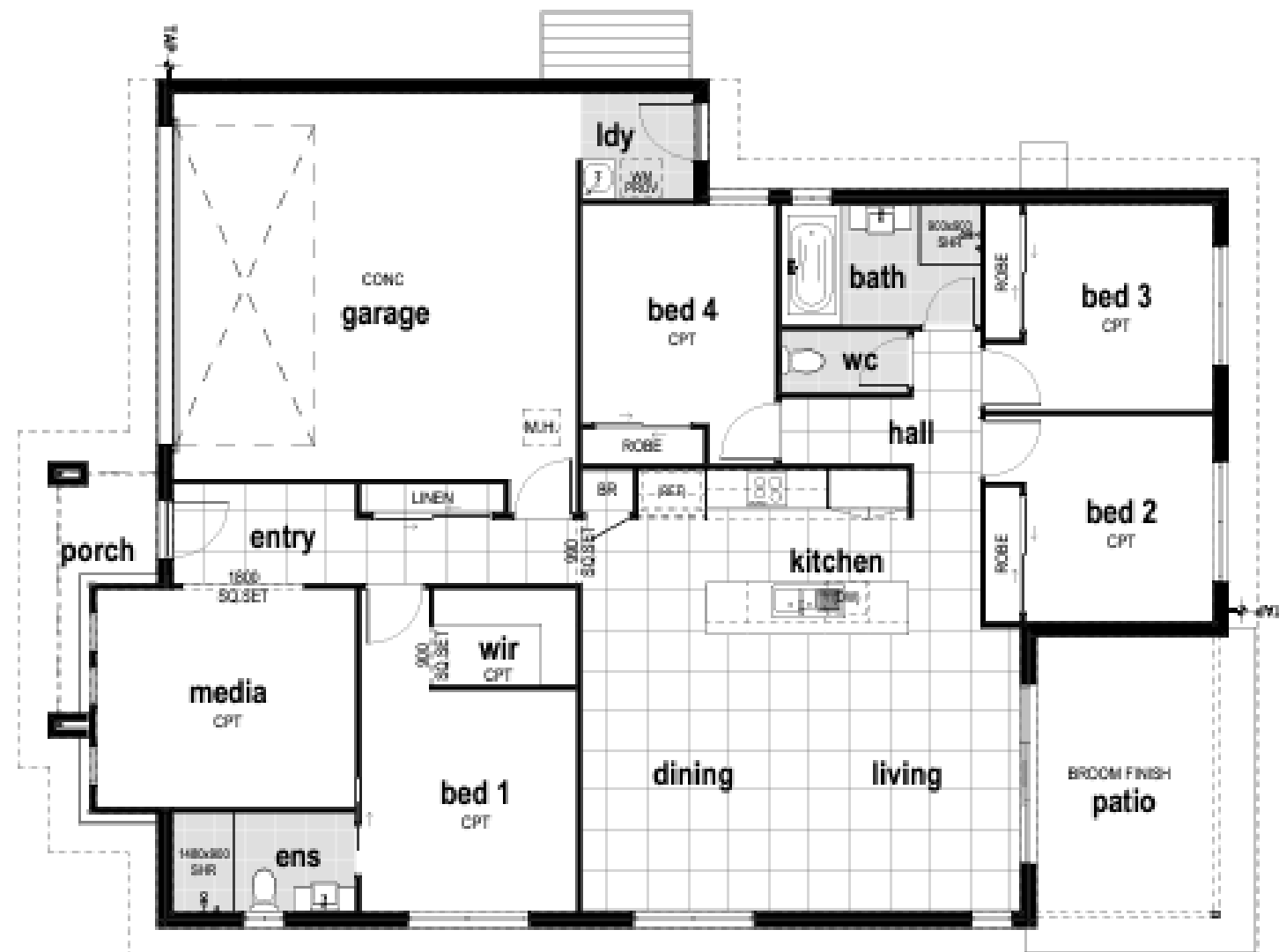
2 Car Garage



2 Living



203 m<sup>2</sup>



## Build Contract

As part of your Oroshiuri Systems investment you are locking in your build price.



**SPECIFICATION**



**CONTRACT PLAN**

**Homecorp**  
CONSTRUCTIONS

Your home build will be through Homecorp Constructions. From contract signing through to key handover, they will be there every step of the way.





# Step inside your **NEW HOME**

A Homecorp home comes complete and ready to move into. You will have the choice of two internal colour schemes.



Click above to download your colour scheme.

## **Benchtops**

The kitchen comes complete with Stone Benchtops.

## **Air-Conditioning**

Reverse Cycle Air-Conditioning.

## **Porcelain Tiles**

Large 600x600 Porcelain Rectified Tiles to all living areas.

## **Passive Ventilation**

Fly screens are included in all our homes meaning cooling your home will be as simple as opening the windows and turning on bedroom ceiling fans.

## **Landscaping**

Your yard will be complete when you move in. This includes freshly laid turf, feature planting and a fully fenced backyard.



Disclaimer: Renders, floor plans, and images are for illustration purposes only, and should only be used as a guide. These may contain soft furnishings, fixtures, furniture, landscaping, and decorative finishes not offered by Homecorp Constructions for this specific design. Please refer to house specific documentation for accurate details and position of home with respect to the lot.





Disclaimer: Renders, floor plans, and images are for illustration purposes only, and should only be used as a guide. These may contain soft furnishings, fixtures, furniture, landscaping, and decorative finishes not offered by Homecorp Constructions for this specific design. Please refer to house specific documentation for accurate details and position of home with respect to the lot.